



F
r
e
e
B
e
n
d

LED LINEAR LIGHT

Arcflex™



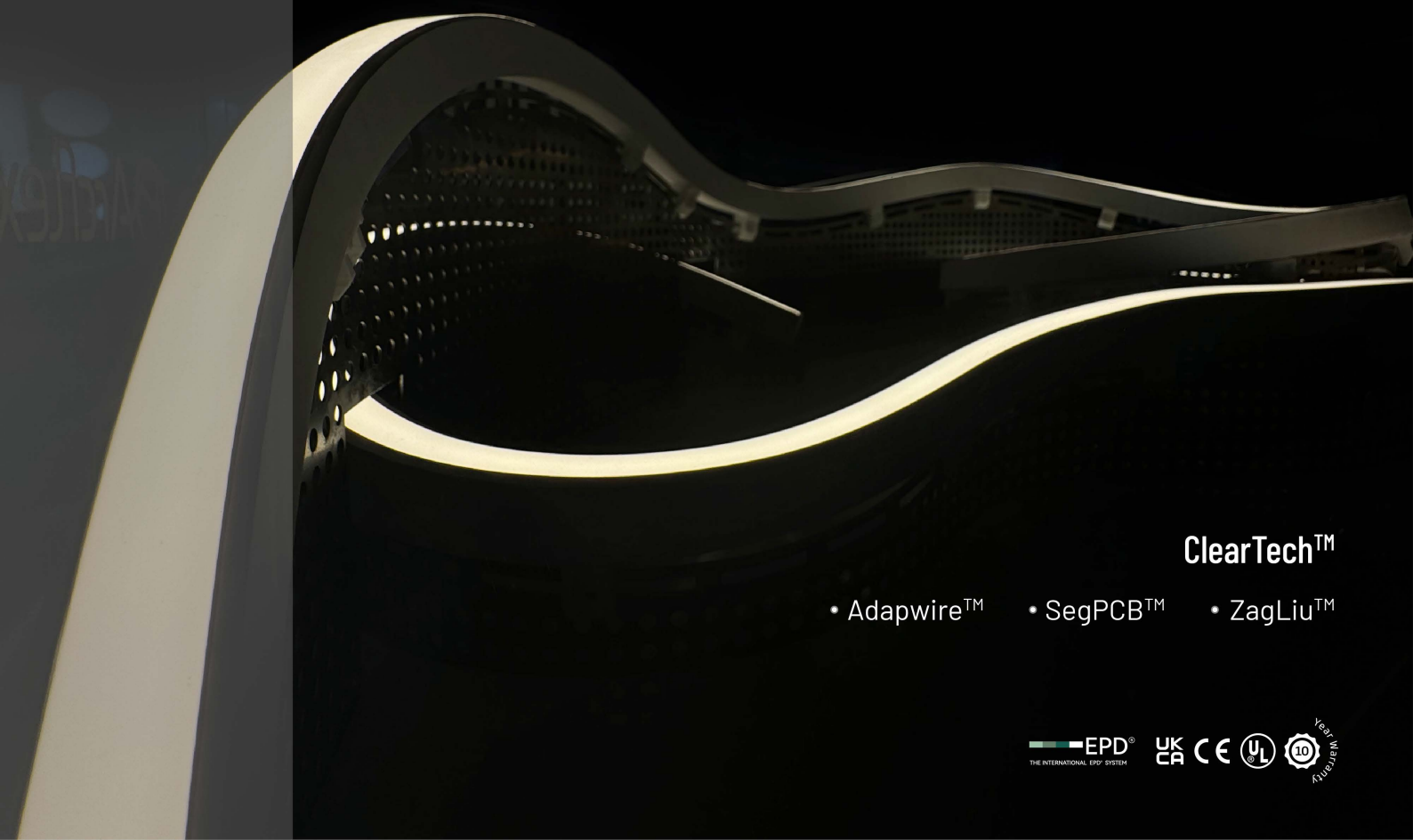
Protection



-40°C-55°C



Anti-UV



ClearTech™

- Adapwire™
- SegPCB™
- ZagLiu™



OUTSHAPE, OUTSHINE, OUTLAST

—

Arcflex™ Free Bend LED Linear Light blends horizontal and vertical bends into a single light, empowering experts everyone from designers and suppliers to light planners and installers to unlock massive success. With the Free Bend capability, designers can amplify their ingenuity and streamline their work process, which in turn, helps construction site personnel to implement products easily without worries of failure and deliver projects more efficiently.

[•]

Utmost Freedom to Lighting Design Unlocked by Excellent Bending in Both Ways

[•]

No Threat from PCB Failure

[•]

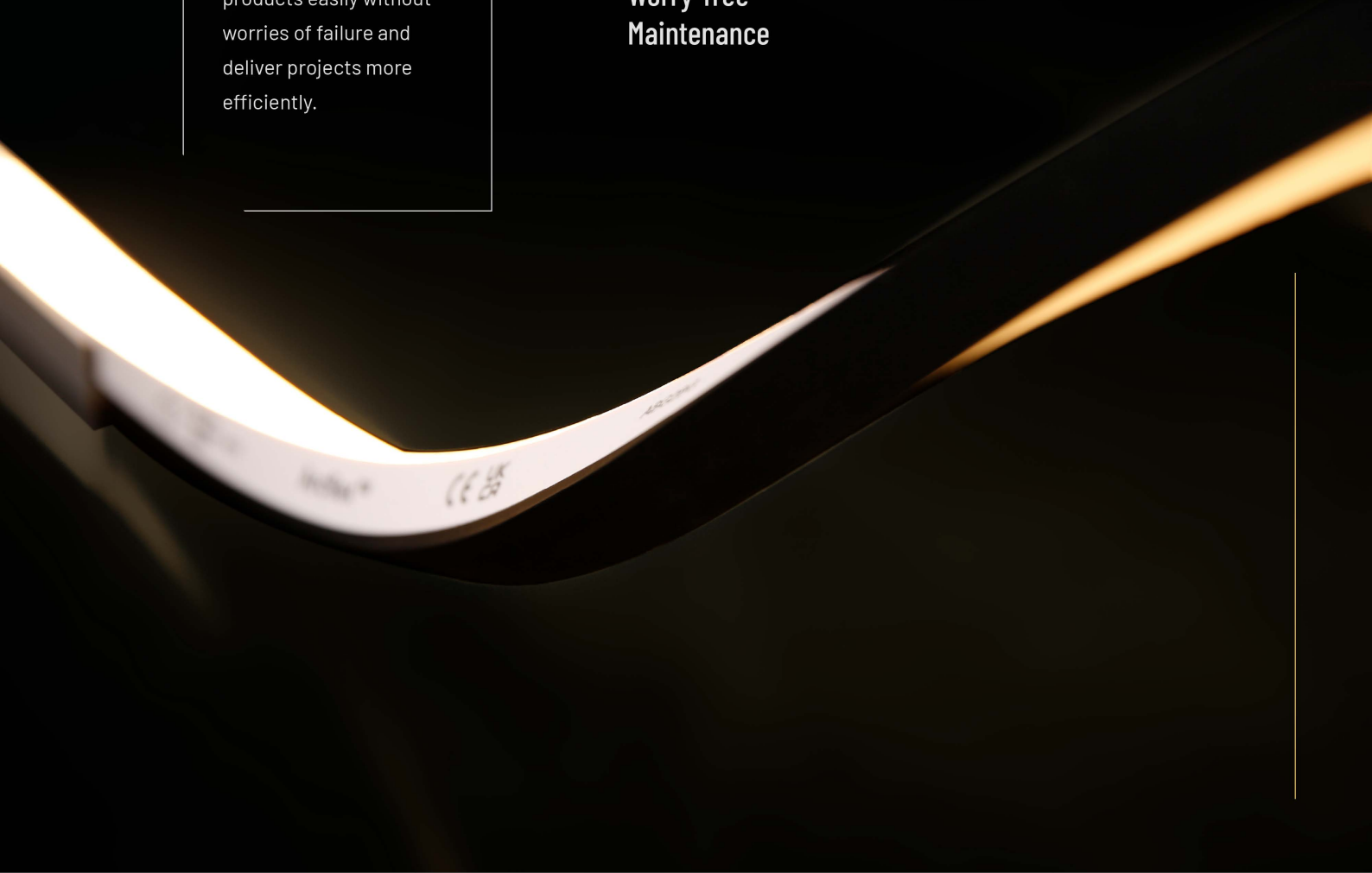
Hassle-free Installation and Worry-free Maintenance

[•]

Improved Energy Efficiency with ErP Compliance

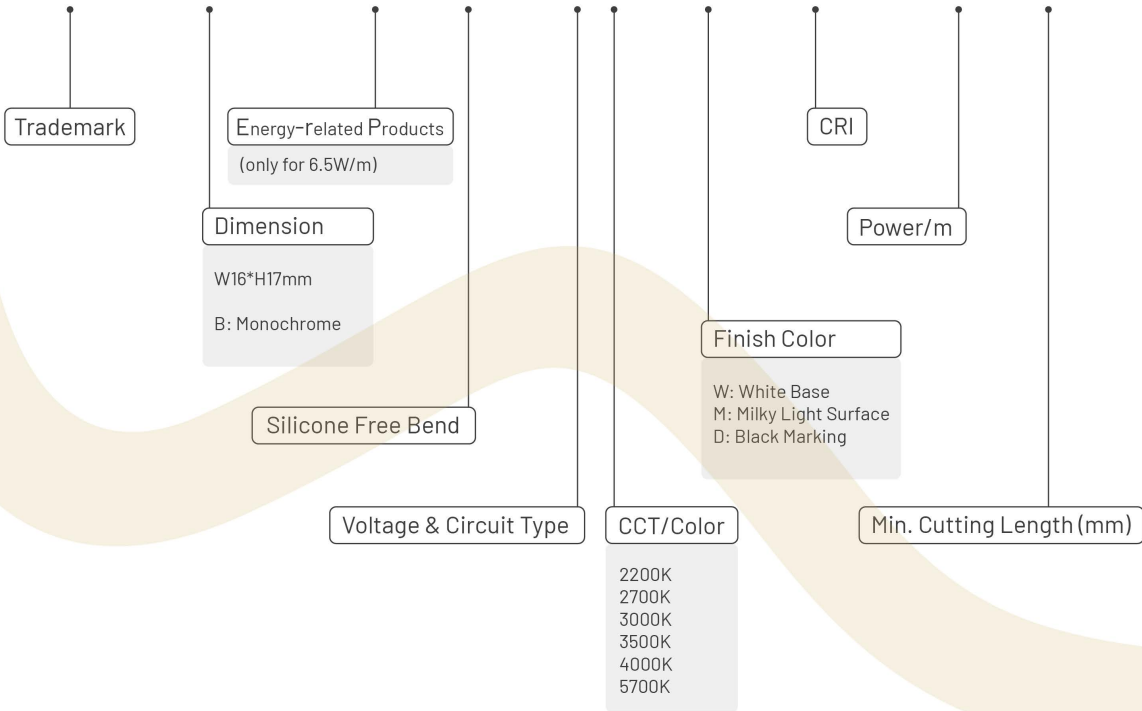
[•]

Packaged Solution with Versatile Free Bend Mounting Profile



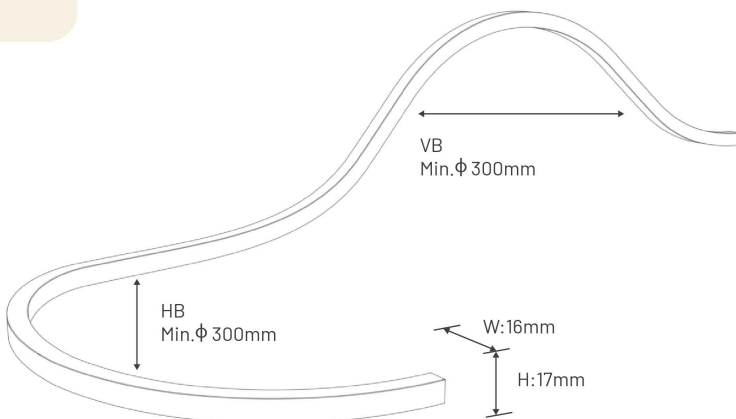
PRODUCT NOMENCLATURE

Arcflex1617B-ErP-SFB-24CC-22K-WMD-80-6.5W-55.6

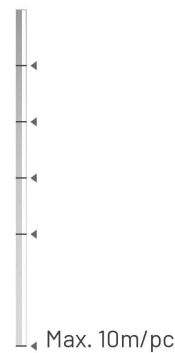


SPECIFICATION

DIMENSION



STANDARD LENGTH



SPECIFICATION

PARAMETER



Ambient Working Temperature
-40~55°C / -40~131°F



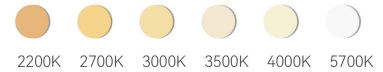
Storage Temperature
-40 ~ 60°C / -40~140°F



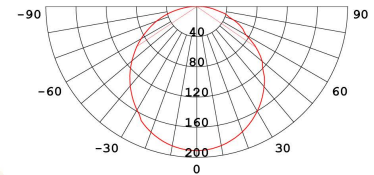
Ambient Installation Temperature
> -40°C / -40°F



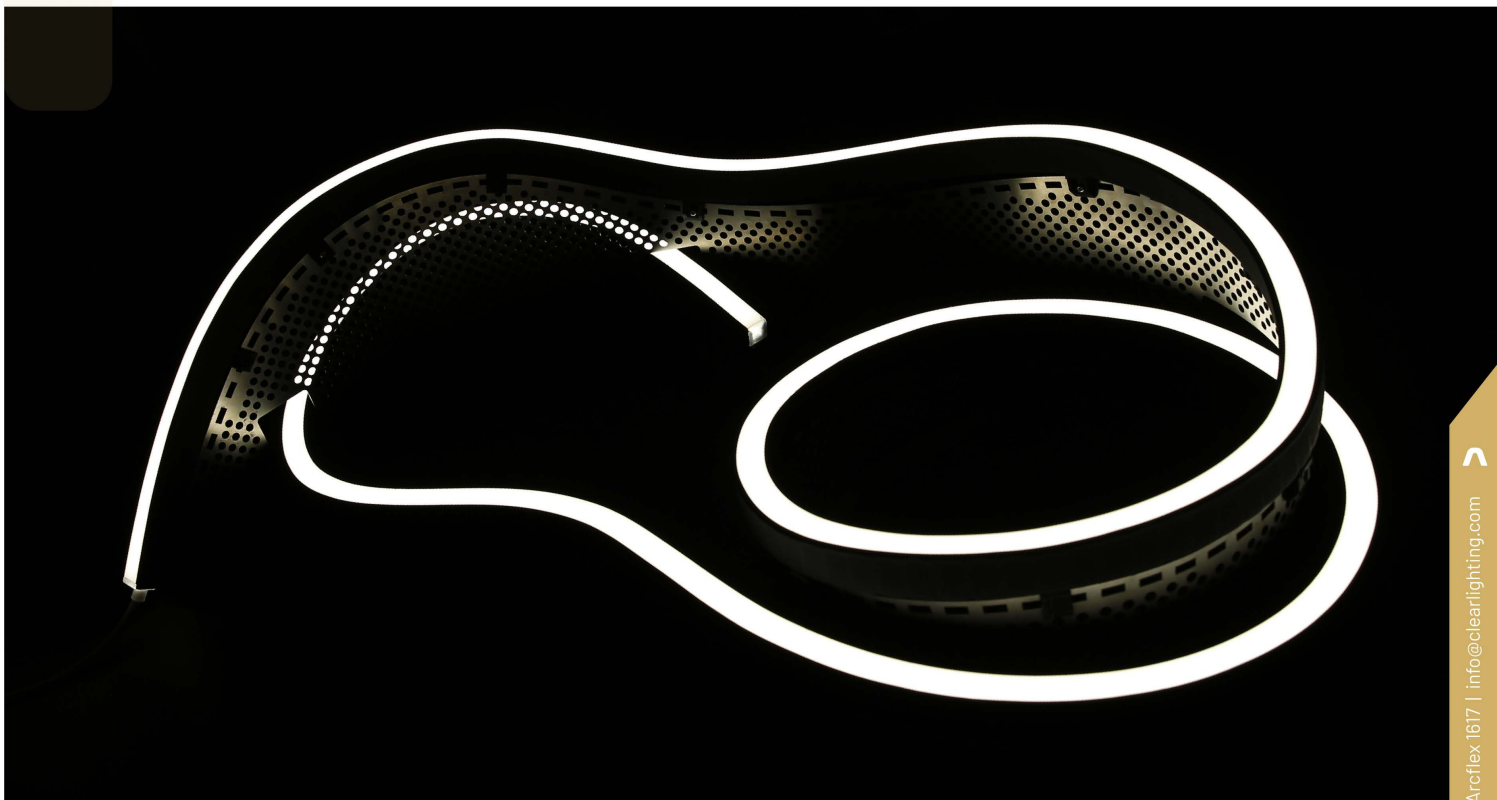
Max. Mounting Surface Temperature
85°C / 185°F



Working Voltage	DC24V
Rated Power/m	6.5W, 12W
Lumen Output(lm/m)	>455lm(ErP 6.5W), >840lm(12W)
IP Rating	IP68
CRI	≥80, ≥90
Weight/m	330g



Note: 5-year warranty for underwater use.

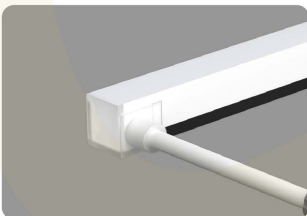
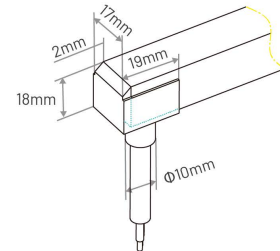


CONNECTOR

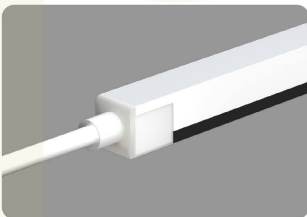
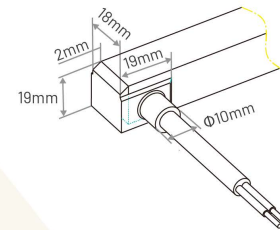
IP68 Silicone Injection-Moulded Connector



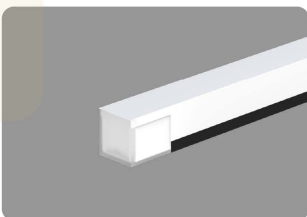
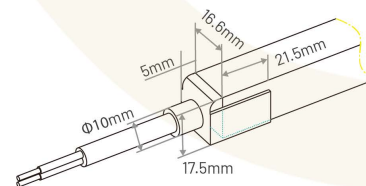
Silicone Injection-Moulded Front Connector (Bottom)



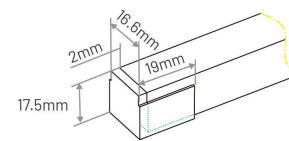
Silicone Injection-Moulded Front Connector (Side)



Silicone Injection-Moulded Front Connector (End)

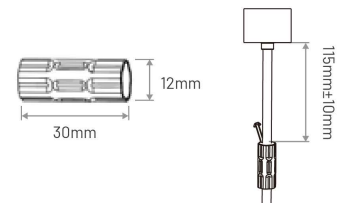


Silicone Injection-Moulded End Cap



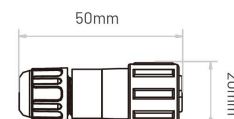
Anti-wicking Ferrule

Note: Warranty will void if it's removed and cause the water ingress.



Male & Female Connector

Optional



PROFILE



Freebend™ Anole™ Profile

Kids
FriendlySolvents
ResistantSaltwater
ResistantUV
Resistant

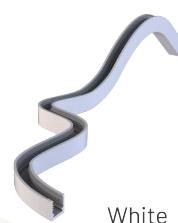
30+

Times
Clamping Force

STANDARD COLOR



Black

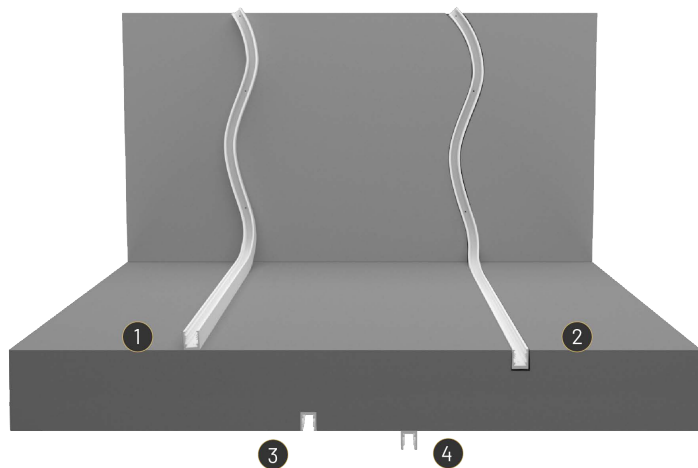


White

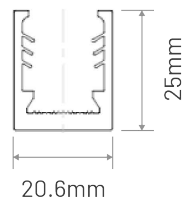
CUSTOM APPEARANCE COLOR



INSTALLATION WAY



DIMENSION

Tolerance: $\pm 0.3\text{mm}$

STANDARD LENGTH

55mm, 110mm, 200mm, 500mm, 1000mm