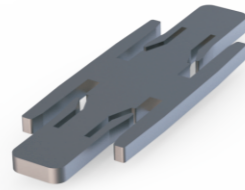
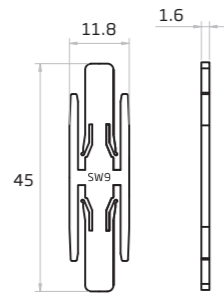


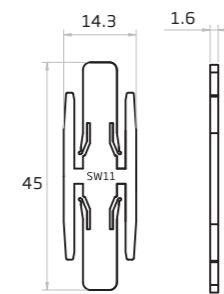
Joining Bracket



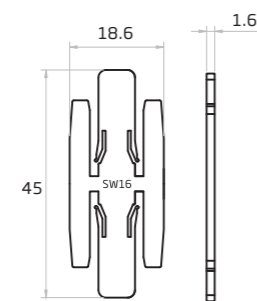
Item Code: SA/JB



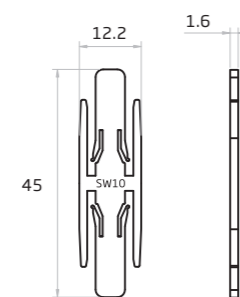
For F10



For F11/F15/F21

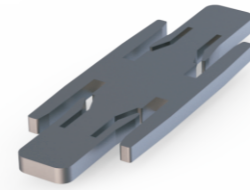


For F22

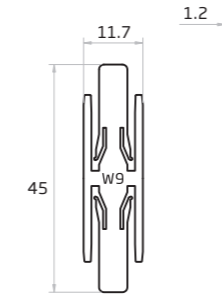


For F23

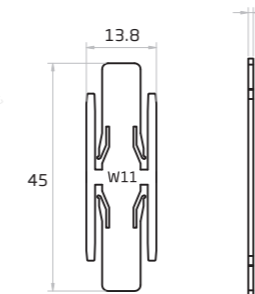
Note:
Applicable to serrated aluminum profile.



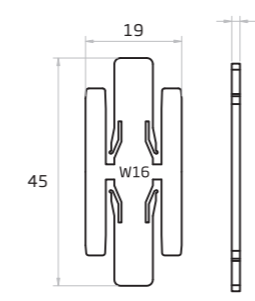
Item Code: A/JB



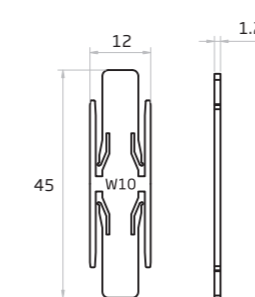
For F10



For F11/F15/F21

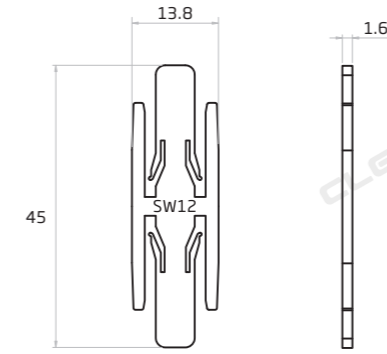


For F22



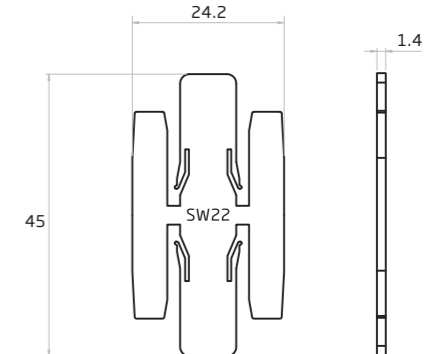
For F23

Note:
Applicable to aluminum profile.



For F1212

Note:
Applicable to serrated aluminum profile.



For F2219/F2222

Note:
Applicable to aluminum profile.

Installation Instructions

Step 1

Fix the first piece of aluminum profile with the screws before inserting the joining bracket.

Step 2

Insert the joining bracket to the bottom slot of aluminum profile. Keep pushing till it's in place.

Step 3

Likewise, insert the joining bracket into the adjacent aluminum profile.

Step 4

5mm Gap (side view)

Fix another aluminum profile with screws after the joining bracket is inserted in place. Repeat the above steps to splice more aluminum profiles.